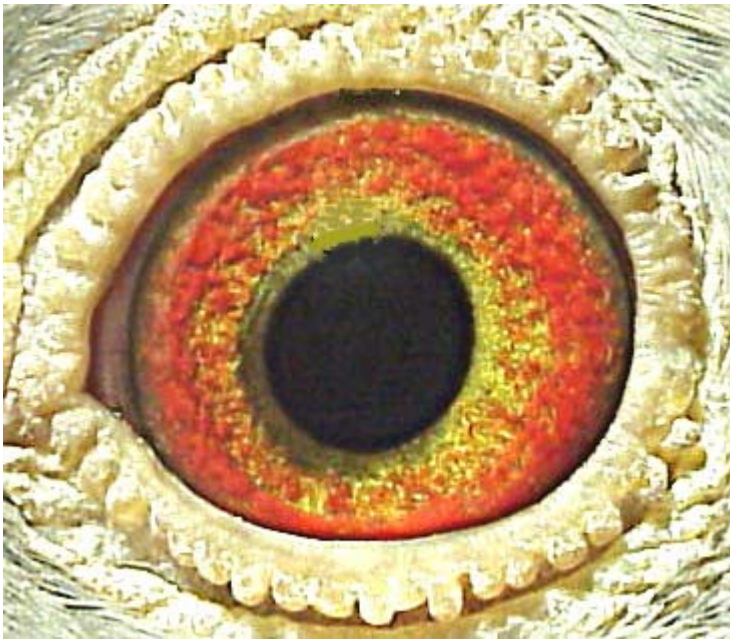


## EYE CRITIQUES & EVALUATIONS

By The Resident Expert on The South African Pigeon Mailing List.



The iris is of a crusted yet velvet texture, very rich and blending in with the rest of the eye, showing lots of vitality.

I would have liked the fifth circle or breeding circle to have been just a little wider if I was to criticise the eye at all, the other criticism being that in various places the iris has dropped away, interrupting the evenness that I like to see in the correlation when looking for perfection. You will notice blobs of the iris red pigment in this area, which I really do not want to see. I like the iris to be well contained and defined, on both of it's boundaries, inner and outer. The adaptation shows a 30% super imposed composite on the circle of adaptation, which is a good racing sign. Jack Barkel